



Laerdal[®]
helping save lives



SimCapture Enterprise

A learning management solution for healthcare simulation and education

SimCapture is a learning management solution that helps healthcare institutions to deliver high-quality training, education, and quality improvement programs. With access to valuable data, it generates reports and statistics on performance and trends to track usage, KPIs and learning outcomes.

SimCapture allows you to effectively manage, record, and assess simulation training on-site, in-situ and remotely. It captures audio, video, evaluations, annotations, patient monitors, clinical inputs and simulator data in a single web-based interface. And since SimCapture is mobile-friendly, you can use it anywhere and anytime.



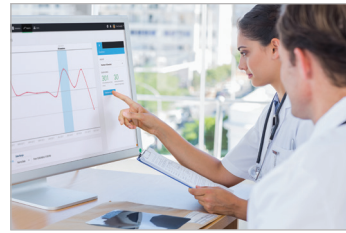
Turn data into insight

Through debriefings, assessments and evaluations, SimCapture creates data that is meaningful and actionable. Ideal for research or learning needs analysis at the individual and course level. Utilize consistent and data-driven feedback to impact quality outcomes in the clinical and education settings.



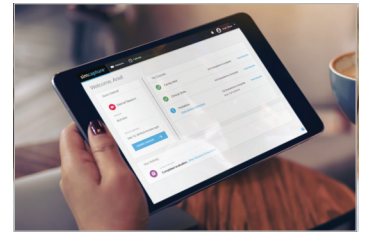
Improve clinical competency

Get measurable outcome by aligning metrics with educational objectives in your simulation programs. Standardizing assessments for formative and summative evaluations creates continuity in your simulation program that makes experiences repeatable, and therefore equitable.



Get the optimal experience

SimCapture helps you improve simulation program efficiency through resource and capacity management, scheduling, ROI data, ease of evaluation and flexible workflows.



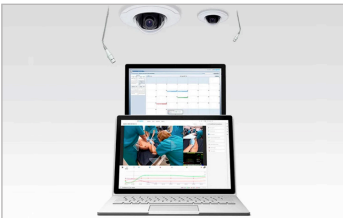
Deliver training from anywhere

With the worldwide access, learners can access content and training right from their mobile devices. They can access their sessions for debriefing, complete self-evaluations and view their scores and reports from anywhere. SimCapture also allow learners to view recordings of other simulation sessions and debrief from their home.

Capture everything from anywhere

Capture data in your simulation room with regular AV system, in-situ with the SimCapture App or Ultraportable – or increase training opportunities for your students with the new learner-driven features.

AV System



Ultraportable



SimCapture iOS App



Learner Driven Scenarios



SimCapture Enterprise features

- Synchronized capture of multiple camera angles
- Simulator data capture and visualization
- Use your mobile device to record sessions and do debriefings
- Medical device capture (EKG, Ultrasound, EMR)
- Learner and faculty tracking and portfolios
- Single Sign-On module
- Resource tracking and reporting
- Center sign-in directs and tracks users
- Video annotation and session self-reflection
- Debrief from anywhere using just a browser
- Learner, faculty and facility usage reports
- Customizable scenarios
- Scheduling and reservation request process
- Flexible and scalable - one room or many
- Secure, mobile-friendly and cloud-based
- Checklist builder and custom assessments
- Courses and curriculum tracking
- Learner driven scenarios for Peer to Peer and Self-recorded training
- Robust suite of assessment and course performance reports

Services

We are committed to helping our users and instructors gain the knowledge and insights they need to best use our SimCapture solution. That's why we offer an extensive Implementation Service package, including Technical Installation and Educational Services. Our Educational Services offer both on-site instructor-led courses as well as virtual sessions to ensure your training is at your convenience.

